



Griffith WELCOME GUIDE

PRODUCED BY



CORRECT AS AT 25/01/2024

Contents

| | |
|---------------------------|----|
| Welcome to Griffith | 3 |
| Griffith City Council | 4 |
| Council Facilities | 5 |
| Services | 6 |
| Waste Collection Services | 21 |

ACKNOWLEDGEMENT OF COUNTRY

The Griffith Region is located in the heart of Wiradjuri Country, the largest indigenous nation in Australia. It reaches from the Blue Mountains in the east, to Hay in the west, north to Nyngan and south to Albury. This area is also known as “the land of three rivers”.

Griffith City Council would like to acknowledge that the Wiradjuri people are the traditional custodians of this region, and have been the custodians for many centuries. We pay our respect to Wiradjuri Elders past, present and future.

The names of many Griffith streets and nearby towns are Aboriginal words. Here are a few you may come across and their English meaning: Banna - rain or water; Barellan - meeting of water; Benerembah - man with eloped woman, Jondaryan - a valley, Yenda - swampy place.

Welcome..

Welcome to Griffith! We are pleased you have made the move to such a wonderful region.

Griffith is a cosmopolitan city with more than 60 nationalities contributing to our cultural tapestry. Our cultural diversity has undoubtedly influenced the lifestyle that revolves around food, wine, agriculture and community.

Sitting 450km north of Melbourne, 570km west of Sydney and 350km from Canberra, Griffith is centrally located in the fertile heart of the Murrumbidgee Irrigation Area, of south west New South Wales. With a thriving industrial sector, sophisticated boutiques, authentic dining options, a range of recreational facilities and attractions, Griffith is renowned for its vitality and warm hospitality.

This guide has been designed to assist you with all that you need to settle into your new home. Inside you will find all relevant information relating to the services that Griffith City Council provides to residents, community services, and other useful information that will have you feeling like a local in no time.



Griffith City Council

“Griffith is a thriving and innovative regional capital with a vibrant lifestyle and diverse economy. We embrace our community, heritage, culture and environment.”

GRIFFITH CITY COUNCIL

General Enquiries

1 Benerambah Street, Griffith

PO Box 485 GRIFFITH NSW 2680

Mon – Fri: 8.15am - 4pm (excl public holidays)

PH: 1300 176 077

W: www.griffith.nsw.gov.au

E: admin@griffith.nsw.gov.au



www.facebook.com/griffithcitycouncil

For after hours service regarding water, sewer, roads and health matters:

PH: 02 6969 4832

GRIFFITH CITY COUNCIL WEBSITE

The Griffith City Council website provides you with up to date information regarding what's on, investing, grants and funding, council meetings, committee meeting agendas and minutes, health and environmental issues, links to facilities, media releases and more.

W: www.griffith.nsw.gov.au

Visit the **Community Services Directory** for information regarding social, recreational, service and sporting groups.

W: www.griffith.nsw.gov.au/community-services-directory

VOLUNTEERING

For information regarding community volunteering please phone Human Resources.

PH: 1300 176 077

COUNCIL MEETINGS

Ordinary meetings are held on the second and fourth Tuesday of every month. Copies of agendas and minutes are available on the Griffith City Council website and can be viewed live on the council Facebook page. Business papers for each meeting are available the Friday before every meeting at the Griffith City Council office.

COUNCILLORS

Griffith City Council has 12 Councillors that are elected every four years. For details and photos of your local councillors visit the council website. Residents are invited to speak to their local councillors about any issues that concern them about the area.

RATES

For information about rates, charges and payment options call Griffith City Council.

PH: 1300 176 077

COMMUNITY GRANTS

Griffith City Council Community Grants Scheme offers funding opportunities for local community groups and services. For further information call or visit the Council website.

PH: 1300 176 077

EMPLOYMENT

Vacancies for council positions are advertised in local media and posted on the Griffith City Council website and Facebook page.

Council Facilities

Griffith City Council run a number of facilities, all of which are the perfect place to gain information and meet like-minded people.



GRIFFITH TOURISM HUB

Cnr of Banna & Jondaryan Avenue, Griffith

The Griffith Tourism Hub is open 7 days providing high quality visitor servicing, marketing and events. Visit the Hub to view an impressive interpretive display which showcases an overview of all that is Griffith, and chat to the friendly tourism team to gain insight on local information. The Griffith Tourism Hub Gift shop offers a diverse range of regional produce, indigenous artwork, quality giftware and local merchandise, as well as customised hampers to suit your needs.



WHAT'S ON

PH: 1800 681 141

W: visitgriffith.com.au

E: visitgriffith@griffith.com.au

f facebook.com/visitgriffith

GRIFFITH REGIONAL ART GALLERY

167 Banna Avenue, Griffith

The Griffith Regional Art Gallery has an annual program showcasing nationally significant exhibitions. The Griffith Regional Art Gallery also offers a vibrant public workshop program, gift shop showcasing local artists and is the permanent home of the Nationally Contemporary Jewellery Collection.

Open Wednesday to Friday 10am - 5pm

Weekends 11am - 2pm

PH: 02 6962 8338

W: www.griffith.nsw.gov.au/gallery

GRIFFITH AIRPORT

Remembrance Drive, Griffith

Located 5km from the CBD the Griffith Airport offers regular flights to Sydney serviced by Rex Regional Express (REX) and Qantas Link.

PH: 02 6964 5600

W: www.griffith.nsw.gov.au/airport

www.rex.com.au | www.qantas.com.au

GRIFFITH REGIONAL THEATRE

1 Neville Place, Griffith

The Griffith Regional Theatre presents a diverse annual program of touring and local performances including drama, circus, music, comedy and children theatre. Alongside the 523-seat auditorium, the Griffith Regional Theatre has multiple spaces for hire. An annual members program is available. Contact the box office for information and tickets.

Box Office open Monday to Friday 10am - 5pm

PH: 02 6962 8444

W: www.griffithregionaltheatre.com

GRIFFITH REGIONAL AQUATIC AND LEISURE CENTRE

Cnr Wayeela & Olympic Street, Griffith

Griffith's only multi-purpose leisure centre, offers a full-service gym, aerobics classes, learn to swim program and 25m-indoor swimming pool. During summer, enjoy the 50m outdoor pool, heated for your comfort.

Open 7 days.

PH: 02 6962 8228

W: www.gralc.com.au

WESTERN RIVERINA LIBRARY/GRIFFITH CITY LIBRARY

233 Banna Avenue, Griffith

The community hub of Griffith. This progressive library offers a wide range of groups and activities for all ages: youth space, baby bounce, tech savvy seniors, movie days, Book Club, free WiFi, mobile library and more.

Open Monday, Tuesday, Wednesday and Friday:
9am – 5:30pm

Thursday: 9am – 5:30pm

Saturday: 9am – 4pm

PH: 02 6962 8300

W: www.wrl.nsw.gov.au

GRIFFITH PIONEER PARK MUSEUM

1 Remembrance Drive, Griffith

Discover the pioneering history of Griffith within this fabulous open-air museum. Home to over forty recreated buildings on eleven hectares of bushland on Scenic Hill, Pioneer Park Museum also features the Italian Museum & Cultural Centre, the Wine and Irrigation Museum, the Knitted Garden and Todd Shed.

Open 7 days.

PH: 02 6962 4196

W: www.griffith.nsw.gov.au/pioneer

CITY PARK & COMMUNITY GARDENS

Kookora Street, Griffith

Located on the main canal, City Park is a lovely place to stroll, picnic and play. Boasting lovely lawn and barbecue areas, paths for walking or riding, an outdoor gym and the tallest climbing frame in Australia. Cross the bridge over the Canal and enter Community Gardens where you can find an off-leash dog park at the corner of Murrumbidgee Avenue & Coolah Street.

CENTENARY SCULPTURES

IOOF Park – Kookora Street, Griffith

Stroll from City Park along the canal to centenary walk to view the granite sculptures, product of the International Sculpture Symposium hosted as part of Griffith's Centenary celebrations in 2016.

MEMORIAL GARDENS

Banna Avenue, Griffith

Central to the main street, Memorial Gardens provides a tranquil resting area and is home to the Griffith War Memorial.

LAKE WYANGAN PICNIC AREA

Jones Road into Lakes Road, Lake Wyangan.

Lake Wyangan is only a short ten-minute drive north-west of Griffith. With serene views across the lake, you will find large grassed areas, picnic tables, barbecue facilities and an animal enclosure throughout the reserve. Free boat ramp and jetty available.

TED SCOBIE OVAL AND WALKING TRACK

Doolan Crescent, Griffith

A great place to kick a ball, walk the dog, or even play volleyball. There is a paved path around the perimeter of the oval complex - a popular walking spot for locals. Ted Scobie Oval features a kids playground, outdoor gym, barbecue area and picnic shelters making it the perfect family hang out in the heart of Collina.

GRIFFITH REGIONAL SPORTS PRECINCT

14 Merrowie Street, Griffith

The Griffith Regional Sports precinct is a state-of-the-art facility, equipped with indoor basketball courts, all-weather netball courts, hockey fields and synthetic running tracks.

PH: 02 6969 488



Services

DISABLED SERVICES | AGED CARE | ACCOMMODATION – NURSING HOMES & AGED UNITS

Please refer to Council's online Community Services Directory for all information regarding disabled services, aged care, nursing homes and aged units.

W: www.griffith.nsw.gov.au/csd

SENIORS CARDS

All permanent residents of NSW over the age of 60 years who are not substantially employed (defined as normally working 20 hours a week or more) are eligible for a Seniors Card.

Application forms are available at Australia Post, Service NSW or online.

W: apply.service.nsw.gov.au/seniors-card

ANIMAL REGISTRATION

Griffith City Council - 1 Benerembah Street, Griffith

Lifetime pet registration can be done online or by visiting Griffith City Council's administration office.

W: www.petregistry.nsw.gov.au

For more information:

W: www.griffith.nsw.gov.au/pet-identification-lifetime

GRIFFITH CITY POUND & REHOMING CENTRE

Duchatel Road, Griffith

Open by appointment Monday - Friday

PH: 02 6962 8100

PH: 0408 210 169 (Animal Hotline)

BANKS AND FINANCIAL INSTITUTIONS

ANZ

194 Banna Avenue, Griffith

PH: 13 13 14

ATM

BankWest Business Banking Centre

Unit 3/31-43 Ulong Street, Griffith

PH: 13 17 18

Beyond Bank

132 Yambil Street, Griffith

PH: 02 6962 1892

Commonwealth Bank

Cnr Banna Avenue & Kooyoo Street, Griffith

PH: 02 6962 1077

ATM

National Australia Bank (NAB)

322 Banna Avenue, Griffith

PH: 13 22 65

ATM

Rabo Bank Australia

1/462-468 Banna Avenue, Griffith

PH: 02 6969 7700

St George Bank

172 Banna Avenue, Griffith

PH: 13 33 30

ATM

Westpac Bank

Cnr Banna Avenue & Kooyoo Street, Griffith

PH: 02 6960 2433

ATM

CEMETERIES

Griffith Cemetery

83-111 Wakaden Street, Griffith

PH: 02 6962 8100

W: www.griffith.nsw.gov.au/cemetery

Yenda Cemetery

Cemetery Road, Yenda

PH: 1300 176 077

CHILDCARE CENTRES

Good Start Early Learning Centres

PH: 1800 222 543

Griffith | 70 Coolah Street, Griffith

Driver | 4 Sanders Street, Griffith

Clifton Boulevard | 105 Clifton Boulevard, Griffith

Sanders Street | 4-8 Sanders Street, Griffith

HeadStart Early Learning Centre

2-6 Madden Drive, Griffith

PH: 02 6962 4470

Dorothy Waide Centre for Early Learning

1 Middleton Avenue, Griffith

PH: 02 6962 6833

Western Riverina Family Day Care Scheme

29 Yambil Street, Griffith

(enter via Griffith Tourism Hub Carpark)

PH: 02 6964 3440

Griffith PCYC

5 Olympic Street, Griffith

PH: 02 6964 2004

After school & vacation care

Out of school hours care for children 6-12 years

Kidz Biz Griffith

C/- Griffith Public School, Coolah Street, Griffith

PH: 02 6964 3360

Before/After school & vacation Care

Riverina Childcare Centre

42 Noorebar Avenue, Griffith

PH: 02 6962 418

Belong Family Day Care

102 Ortella Street, Griffith

PH: 02 6964 8515

PLAYGROUPS

Playgroups Association of NSW (Riverina)

Provides contact names for playgroups held in NSW including: Griffith, Beelbangera, Tharbogang, Lake Wyangan and Yenda.

PH: 1800 171 882

W: www.playgroupsnsw.com.au

Griffith Pioneer Park Playgroup

Pioneer Park Hall, Remembrance Drive, Griffith

PH: 1800 171 882

EDUCATION

PRESCHOOLS

Griffith Central Preschool

29 Yambil Street, Griffith

(enter via Tourism Hub Carpark)

PH: 02 6964 4077

Griffith East Preschool

Cnr Poole & Sanders Street, Griffith

PH: 02 6962 2430

Griffith Preschool Kindergarten

Kindergarten Lane, Griffith

PH: 02 6964 4283

Griffith Wiradjuri Aboriginal Preschool

101 Blumer Avenue, Griffith

PH: 02 6962 2106

Yenda Preschool

2 Bingar Street, Yenda

PH: 02 6968 1335

PRIMARY SCHOOLS

Beelbangera Public School

Rankins Springs Road, Beelbangera

PH: 02 6963 5368

E: beelbangerap.school@det.nsw.edu.au

Griffith East Public School

141 Wakaden Street, Griffith

PH: 02 6962 1804

E: griffithe-p.school@det.nsw.edu.au

Griffith North Public School

1 Boonah Street, Griffith

PH: 02 6962 1043

E: griffithn-p.school@det.nsw.edu.au

Hanwood Public School

School Street, Hanwood

PH: 02 6963 0297

E: hanwood-p.school@det.nsw.edu.au

Kalinda SSP School (Special School)

Merrigal Street, Griffith

PH: 02 6962 3271

E: kalinda-s.school@det.nsw.edu.au

Lake Wyangan Public School

Boorga Road, Lake Wyangan

PH: 02 6962 3217

E: lakewyangan-p.school@det.nsw.edu.au

St Mary's Primary School

Edon Street, Yoogali

PH: 02 6962 2224

E: smy-info@ww.catholic.edu.au

St Patrick's Primary School

Warrambool Street, Griffith

PH: 02 6964 2888

E: info@spg.cso.wagga.catholic.edu.au

Tharbogang Public School

Braithwaite Road,, Tharbogang

PH: 02 6963 6242

E: tharbogang-p.school@det.nsw.edu.au

Yenda Public School

Curran Road, Yenda

PH: 02 6968 1236

E: yenda-p.school@det.nsw.edu.au

Yoogali Public School

East Street, Yoogali

PH: 02 6962 4540

E: yoogali-p.school@det.nsw.edu.au

Verity Christian College

9 Stafford Road, Griffith

PH: 02 6964 9953

E: office@vcc.nsw.edu.au

Pre - kindergarten to year 10

SECONDARY SCHOOLS

Marian Catholic College

185 Wakaden Street, Griffith

PH: 02 6962 4655

E: admin@mcc.wagga.catholic.edu.au

Murrumbidgee Regional High School

Griffith High campus

Coolah Street, Griffith

PH: 02 6962 1711

E: griffith-h.school@det.nsw.edu.au

Wade High campus

Poole Street, Griffith

PH: 02 6962 4022

E: wade-h.school@det.nsw.edu.au

Kalinda SSP School (Special School)

Merrigal Street, Griffith

PH: 02 6962 3271

E: kalinda-s.school@det.nsw.edu.au



APG (Australia Personnel Global)

93 Yambil Street, Griffith

PH: 02 6962 4995 | 1300 793 340

Recruitment, Labour hire, Training

**If looking for work for 3 months or longer*

Globe Backpackers

26 Wayeela Street, Griffith

PH: 0499 090 496

Harvest Labour

Acclaimed Workforce

129 Yambil Street, Griffith

PH: 02 6962 6315

Recruitment for the wine industry

Madec

Shop 3/104 Yambil Street, Griffith

PH: 02 6963 2200 | 1300 436 332

Harvest labour services

ADULT EDUCATION & TRAINING

Western Riverina Community College (WRCC)

23 Hickey Crescent, Griffith

PH: 02 6964 5334

W: www.wrcc.nsw.edu.au

Griffith Skills Training Centre

86 Yambil Street, Griffith

PH: 02 6964 2811

Riverina Institute of TAFE

Neville Place, Griffith

PH: 131 601

W: www.tafensw.edu.au

Country Universities Centre Western Riverina

1/2 Olympic Street, Griffith

PH: 0436 461 003

W: www.cucwesternriverina.edu.au

EMPLOYMENT AGENCIES

Agri Labour

QLD Based, services Griffith NSW

PH: 1300 247 823

W: www.agrilabour.com.au

Murray Mallee Training Company Ltd

108b Yambil Street, Griffith

PH: 02 6964 0400

PH: 02 6964 8664

Specialise in traineeships & apprenticeships

Summit Employment & Training

86 Yambil Street, Griffith

PH: 02 6964 2718

General employment

Sureway Employment & Training

8/454 Banna Ave, Griffith

PH: 1300 787 392

General employment

Eworks Employment Solutions Inc

381 Yambil Street, Griffith

PH: 0475 974 593 | 02 6964 5209

General employment & DES employment centre

Easy Recruit Australia

2/109 Banna Avenue, Griffith

PH: 0431 4283 40

Labour hire & recruitment services

CORPORATE GROUPS

Griffith Business Chamber

PH: 0412 644 629

W: www.griffithbusinesschamber.com.au

E: info@griffithbusinesschamber.com.au

REAL ESTATE AGENTS

Bowmans Real Estate

69 Yambil Street, Griffith

Ph: 02 6964 3222

W: www.bowmansrealestate.com.au

Elders Real Estate

1/490 Banna Avenue, Griffith

PH: 02 6962 3722

W: www.eldersgriffith.com.au

Griffith Real Estate

146 Yambil Street, Griffith

PH: 02 6962 1455

W: www.griffithrestate.com.au

Nutrien Harcourts

9 Lenehan Road, Griffith

PH: 02 6262 1811

W: www.nutrienharcourts.net.au

Soul Property Agents

10 Wyangan Avenue, Griffith

PH: 0412 335 078

W: www.soulpropertyagents.com.au

LJ Hooker

415/423 Banna Avenue, Griffith

PH: 02 6964 5552

W: www.griffith.ljhooker.com.au

Capello & Co Property

Level 1/93 Yambil Street, Griffith

PH: 0458 684 518

W: www.cappelloc.com.au



EMERGENCY SERVICES



In case of an Emergency

Stay calm and dial 000

Ambulance

Wakaden Street, Griffith

Emergencies **PH: 000**
General Enquiries **PH: 02 6962 1200**
Transport Enquiries **PH: 131 233**

Fire Brigade (Fire & Rescue NSW)

11 Jondaryan Avenue, Griffith

Emergencies **PH: 000**
WR3 Zone Office **PH: 02 6929 57010**

RFS - NSW Fire Service (Rural Fire Service)

200 Wakaden Street, Griffith City Council

Bush Fire Brigade **PH: 02 69667800**

Griffith Police Station

41-47 Railway Street, Griffith

Emergencies **PH: 000**
Business Enquiries **PH: 02 6969 4299**

State Emergency Service

Emergencies **PH: 132 500**
Business Calls **PH: 02 6964 1195**

Hospital

Griffith Base Hospital Emergency

Noorebar Avenue, Griffith

PH: 02 6969 5555

NRMA

374 Banna Avenue, Griffith

Griffith office **PH: 02 6962 6299**
Road Service **PH: 131 111**

HEALTH

Murrumbidgee Local Health District

For hospital-based services and community health services visit the Murrumbidgee Local Health District website.

W: www.mlhd.health.nsw.gov.au

Immunisation Clinic

Senior Citizens Centre, 47 Canal Street, Griffith

Council provides an infant immunisation program for infanrix, sabin (polio), measles/mumps/rubella, comvav (hepatitis B and HIB haemophilus influenza type B), hepatitis B, chicken pox, pneumococcal and meningococcal.

For further information about water testing or head lice, contact Griffith City Council's Environmental Health Unit.

PH: 1300 176 077

Griffith Early Intervention Service

7 Middleton Avenue, Griffith

PH: 02 6962 7790

Education and therapy service for children (0-5yr) with disabilities or delays.

Griffith Community Health Centre

39 Yambil Street, Griffith

PH: 02 6966 9900

Domicilliary nursing, palliative care, aboriginal health & asthma.

Griffith Community Mental Health Drug and Alcohol Service

175 Yambil Street, Griffith

PH: 02 6961 0100

Medicare & Centrelink

95-97 Yambil St, Griffith

PH: 132 011

Monday to Friday 9am – 4:30pm

MEDICAL PRACTITIONERS

Griffith Medical Centre

1 Animoo Avenue, Griffith

PH: 02 6964 5888

Griffith Aboriginal Medical Service

38-42 Jondaryan Avenue, Griffith

PH: 02 6962 0000

Your Health

105 Binya Street, Griffith

PH: 02 6962 7661

Kookora Surgery

134 Kookora Street, Griffith

PH: 02 6962 1100

Hanwood Surgery

3 Hanwood Road, Hanwood

PH: 02 6963 0214

Dr Taghrid Samuel

Driver Shopping Centre

Shop 9, Sanders Street, Griffith

PH: 02 6964 8337

DENTISTS

Griffith Dental Surgery

4 Noorebar Avenue, Griffith

PH: 02 6962 3029

Riverina Smiles

2 Palla Street, Griffith

PH: 02 6964 1888

Yambil Dental Care

176 Yambil Street, Griffith

PH: 02 6962 3048

Griffith Dental Lounge

Griffith City Plaza

Shop 1,2/ 130-140 Banna Avenue, Griffith

PH: 02 6964 6667

Griffith Base Hospital Dental Clinic

Warrambool Street, Griffith

PH: 1800 450 046

Griffith Straight White Smiles

Griffith Central, 24/ 10-12 Yambil Street, Griffith

PH: 02 6964 2100

HOSPITALS

Griffith Base Hospital

Noorebar Avenue, Griffith

PH: 02 6969 5555

Check with hospital for visiting hours

St Vincent's Community Private Hospital

41-45 Animoo Avenue, Griffith

PH: 02 6966 8300

COMMUNITY SERVICES

Griffith Community Centre Inc.

Unit 1 Olympic Street, Griffith

PH: 02 6962 4144 | 0460 592 343

Community welfare hub

Argyle Community Housing

Unit 2/ 136-140 Yambil Street, Griffith

PH: 1300 274 953

Subsidised housing for financial disadvantaged and elderly

Linking Communities Network

177 Yambil Street, Griffith

PH: 02 6964 4804

Griffith Women's Refuge

96 Kookora Street, Griffith

PH: 02 6964 3381

Barnabas House

80-94 Kookora Street, Griffith

PH: 02 6964 4927

W: www.barnabashouse.org.au

Benevolent institution

Yambil Hub

16 Yambil Street, Griffith

PH: 02 6962 9997

Griffith Aged Support Service & Meals on Wheels

Griffith Community Centre

39 Yambil Street, Griffith

PH: 0460 592 343

W: www.griffithcommunitycentre.org.au

Griffith Post School Options (GPSO)

8-18 Hebden Street, Yoogali

PH: 02 6964 3199

W: www.gpsso.com.au

For adults with physical and intellectual disabilities

RECYCLING AND WASTE

The Griffith City Council waste management facilities are located at Tharbogang and Yenda. The facility is for residents and does not receive any asbestos or hazardous waste. A scale of charges on a per tonne basis applies to the disposal of domestic green waste, demolition and other materials.

Tharbogang Landfill

Slopes Road, Tharbogang

PH: 02 69636 491

Open 7 days: 8am to 5pm

(Closed Christmas Day & Good Friday)

Yenda Landfill

Corner McManus & Twigg Road, Yenda

PH: 02 6962 81010

Open: Sunday 1pm to 5pm

RECYCLING

Griffith Recycling

11 Hams Street, Griffith

PH: 02 6962 7552

General recycling services (glass, cans, paper & cardboard) Commercial recycling of cardboard and paper including confidential documents.

Never dump household or garden rubbish into bushland or reserves.

GOVERNMENT

Local

Griffith City Council

1 Benerembah Street, Griffith

PH: 1300 176 077

W: www.griffith.nsw.gov.au

E: admin@griffith.nsw.gov.au

Monday to Friday: 8.15am - 4pm

(Closed public holidays)

Compliance

Council's officers work to ensure compliance with development consent and matters such as noise complaints, unauthorized land filling and illegal dumping of rubbish.

Drainage

If you have a problem with storm water from Council's public roads or drainage easement, please contact Griffith City Council.

Environment and Health

Complaints relating to environmental conditions such as drainage, odor and rodents should be directed to Griffith City Council.

Food Registration

Premises registered under the Health and Foods Acts are regularly inspected to ensure that the community is protected. Food samples are regularly taken and food quality surveillance is maintained. For further information phone Griffith City Council.

Garbage Collection

Please contact Griffith City Council

PH: 1300 176 077

(Garbage Route – see from page 19)

Planning and Development

Regulations are in place to ensure the safety of buildings, structures and people. All construction work must be approved and inspected at various stages. Having approval for your building will save you time and money in the long term. Application forms and check lists are available online or at Griffith City Council.

Sewerage

Griffith City Council **PH:** 1300 176 077
After hours emergencies **PH:** 02 6969 4832

Septic Tanks

Installation or alteration of septic tanks for premises in non-sewered areas requires a permit. Inspections are required as part of the installation of septic tanks.

Water

Potable (drinking) water supply is available to most suburban and village residents. The city's water supply comes via the irrigation channels before it is filtered and processed to ensure peak water quality. All other areas obtain water via private supplies such as rainwater tanks, rivers, creeks, irrigation channels, dams or bores.

Water Restrictions

Current water restrictions are listed on the Griffith City Council website.

W: www.griffith.nsw.gov.au/water

Livestock Marketing Centre

Lot 862, Griffin Avenue, Griffith

PH: 0 6962 2587 (Saleyards)

Cattle and sheep sales

STATE GOVERNMENT

State Member

Helen Dalton MP

State Office Block 104-110 Banna Avenue, Griffith

PH: 02 6962 6644

E: murray@parliament.nsw.gov.au

Service NSW

12B Kooyoo Street, Griffith

PH: 137 788

RMS | Fair Trading | Births, Deaths and Marriages
| Housing NSW | Office of State Revenue | Seniors Card

Department of Primary Industries (DPI)

217 Murray Rd, Hanwood

PH: 1300 886 235

Environment Protection Authority (EPA)

130-140 Banna Avenue, Griffith

PH: 02 6969 0700

National Parks & Wildlife Service

200 Yambil Street, Griffith

PH: 02 6966 8100

Workcover Authority of NSW

Suites G06-07, 104-110 Banna Avenue, Griffith

PH: 02 6962 8900



FEDERAL GOVERNMENT

Federal Member

Sussan Ley MP

152 Banna Avenue, Griffith

PH: 02 6964 1212

Centrelink

95-97 Yambil Street, Griffith

Employment **PH:** 132 850

Retirement **PH:** 132 300

Disability **PH:** 132 717

Drought Assist **PH:** 132 316

Electoral Roll

PH: 132 326 - Electoral Office

W: www.aec.gov.au/enrol

Local, state and federal election application forms are available from Australian Post, the State Government Office Block or online.

LEGAL

Justice of the Peace

W: www.jp.nsw.gov.au/findajp

MEDIA

TV

WIN Television

PO Box 493, Griffith

PH: 02 6960 1199

W: www.wintv.com.au

E: griffrec@winns.com.au

NEWSPAPER

The Area News

General **PH:** 02 6962 1733

Classifieds **PH:** 1300 656 562

W: www.aneanews.com.au

RADIO STATIONS

TripleM - 96.3AM

52 Jondaryan Avenue, Griffith

General Enquiries **PH:** 02 6969 7860

Competition line **PH:** 132710

Hit FM - 99.7FM

52 Jondaryan Avenue, Griffith

PH: 02 6969 7860

Community 2MIA - 95.1FM

2-6 Groongal Avenue, Griffith

PH: 02 6964 1033

ABC Riverina - 100.5FM

100 Fitzmaurice Street, Wagga Wagga

PH: 02 6923 4811

MULTICULTURAL SERVICES

Italian Speaking Justice of the Peace

Annalisa Surian **PH:** 02 696 5393

Frank Sergi **PH:** 0417 427 803

Indian Speaking Justice of the Peace

Ajit Singh Sandhu **PH:** 02 6962 7155

(Punjabi)

Honorary Italian Vice Consul

Monica Busnello

PH: 1300 176 077

Online appointments:

W: www.consulate-info.com/7018/italy-in-griffith



MIGRANT ENGLISH CLASSES

Western Riverina Community College

23 Hickey Crescent, Griffith

PH: 02 6964 5334

W: www.wrcc.nsw.edu.au

TAFE NSW

1 Neville Place, Griffith

PH: 02 6962 0444 | 131 601

W: www.tafensw.edu.au

W: www.griffith.nsw.gov.au/csd

POST OFFICES

AUSTRALIA POST PH: 131 318

Australia Post Griffith

245 Banna Avenue, Griffith

PH: 02 6961 8914

Griffith East Licensed Post Office

3/20 Probert Avenue, East Griffith

PH: 02 6962 2040

Beelbanger Store Post Office

2-4 Richards Street, Beelbanger

PH: 02 6963 5242

Yenda Licensed Post Office

2 North Avenue, Yenda

PH: 02 6968 1099

Hanwood Village Store

7 Hanwood Avenue, Hanwood

PH: 02 6963 0045

SPORT & RECREATION

Griffith Regional Sports Precinct at Westend

Merrowie Street, Griffith

PH: 02 6969 4884

Griffith Regional Aquatic and Leisure Centre

Corner Wyeela & Olympic Street, Griffith

PH: 02 6962 8228

Anytime Fitness

2/86 Wilandra Avenue, Griffith

PH: 2 6962 4222

All Age Fitness

8 Bonegilla Road, Griffith

PH: 026962 5723

Base Fitness

431 Banna Avenue, Griffith

PH: 0413 621 503

Bellistic

12 Whybrow Street, Griffith

PH: 0428 648 741



Futsal Riverina/Riverina Complete Sports

Hebden Street, Yoogali

PH: 0457 585 228

Underground Fitness

Basement 1/336 Banna Avenue, Griffith

PH: 02 6964 5547

Livefit

126 Wakaden Street, Griffith

PH: 02 6964 5849

RMA & Total Fitness

*East Griffith Shopping Centre, Probert Avenue,
Griffith*

PH: 02 6962 4631

F45 Griffith

Level 3/130-140 Banna Avenue, Griffith

PH: 0409 605 607

DANCE

Jodi's Dance Company

436 Banna Avenue, Griffith

PH: 0401 822 924

MDS (Melissa's Dance Studio)

PH: 0407 408 434 | 6964 3495

W: www.mds4dance.com

SDS Dance (Shanon's Dance Studio)

13 Altin Street, Griffith

PH: 0415 819 590

W: www.sdsgriffith.com

STARS Performing Arts Academy

20C Lenehan Road, Griffith

PH: 0417 356 632

Griffith Country Line Dancers

PH: 02 6968 1545

Griffith Liners

PH: 0427 411 599

Griffith Sequence Dancers

PH: 02 6966 8902 | 0429 696 108

Griffith Social Dancers

PH: 02 6962 1987

COMMUNITY SERVICES

DIRECTORY



Please refer to Council's online Community Services Directory for information on youth groups, community groups, clubs & more.

W: www.griffith.nsw.gov.au/csd

ARTS, DRAMA &

ENTERTAINMENT

Griffith Regional Art Gallery

167 Banna Avenue, Griffith

PH: 02 6962 8338

Griffith Regional Theatre

Neville Place, Griffith

PH: 02 6962 8444

Griffith Regional Association of Performing Arts (GRAPA)

Bonnie Owen

PH: 0455 553 834

W: www.grapa.org.au

Griffith City Cinemas Star Bowling & Family Fun Land

Shop 2, Hometown Centre, Griffith

PH: 02 6964 3102

MARKETS

Griffith Rotary Market

*Griffith Showgrounds / 18 – 22 Walla Avenue,
Griffith*

PH: 0467 653 502

Every Sunday 8am - 12noon | Gold coin donation

TRANSPORT

AIR SERVICES

Regional Express Airlines (REX)

PH: 131 713

W: www.rex.com.au

Daily service between Griffith and Sydney.

QANTAS LINK

PH: 1300 659 161

W: www.qantas.com.au

Daily service between Griffith and Sydney

CAR HIRE/RENTAL

Avis

Griffith Airport - Remembrance Drive, Griffith

PH: 02 6964 2266

Dom's Motors Griffith

1 Banna Avenue, Griffith

PH: 02 6964 1177

Kinto

96 Mackay Ave, Yoogali

PH: 02 6962 8888

W: www.owentoyota.com.au

SIXT

Griffith Airport - Remembrance Drive, Griffith

PH: 02 6962 9122

Thrifty/Hertz Car Rental

Lanham's Motor Group - 1 Ebert Street, Griffith

PH: 133 039

BUS & COACH SERVICES

Griffith Buslines & Charter Services

72-74 Wakaden Street, Griffith

BOOKING PH: 02 6964 3113

W: www.griffithbuslines.com.au

MIA Coaches Griffith

13-15 Jensen Road, Griffith

PH: 02 6964 1240

TAXI

Griffith City Taxi's

Taxi Ranks - Memorial Gardens

PH: 131 008 Bookings

PH: 02 6325 0096 Admin office

Griffith Prestige Car Hire Service

PH: 0428 121 388 Charlie

COMMUNITY TRANSPORT

Intereach Community Transport

Shop 2/63 Yambil Street, Griffith

PH: 1300 488 556

Transport for aged, disabilities.

COACH/RAIL SERVICES

NSW Trainlink

PH: 132 232

W: www.transportnswinfo/regional

PH: 02 6959 5151

Daily services to/from Sydney, Melbourne, connections to rural NSW destinations.

Departure/arrivals to Griffith Railway Station.

Bookings via phone, online or at the Griffith Railway station:

Mon & Tue – CLOSED

Wed & Fri – 8.45am – 11.15am

Thurs 6.45am – 11.15am

Sat 2.45pm – 5.15pm

Sun 6.30am – 10.00am

V/Line

PH: 1800 800 007 V/Line

PH: 02 6962 1741 News & gifts on Banna

W: www.vline.com.au

Daily services to/from Melbourne

Departure/arrivals - Griffith Tourism Hub carpark on Banna Avenue.

Bookings from News and Gifts on Banna.

412- 414 Banna Avenue, Griffith

TRAVEL AGENTS

Flight Centre

Shop 26B Griffith Central, Yambil Street, Griffith

PH: 02 6964 7102

I Travel

288 Banna Avenue, Griffith

PH: 02 6964 1977

W: www.itravelgriffith.com.au

Lets Travel and Cruise

59 Kooyoo Street, Griffith

PH: 02 6964 4644

W: www.letstravelcruise.com.au

What Can I Recycle?

NOT RECYCLABLE

Auto, machinery parts and old tools
Clothing and nappies
Food scraps and green waste
Plastic bags, cling wrap and wrappers

RECYCLABLE

Paper and cardboard
Aerosol, steel and aluminum cans
Plastic bottles and containers
Glass bottles and jars

Community Recycling Centre

The Community Recycling Centres (CRCs) is a permanent drop-off centre for common household problem wastes that can't be collected via the Council kerbside waste and recycling collection services. Griffith householders can drop off problem wastes at our Centre (located at the Tharbogang Waste Management Facility) year round, free of charge.

WHAT CAN I DISPOSE OF AT THE CRC?

Paint
Gas bottles
Fire extinguishers
Motor and other oils
Car and household batteries
Smoke detectors
Fluoro globes and tub

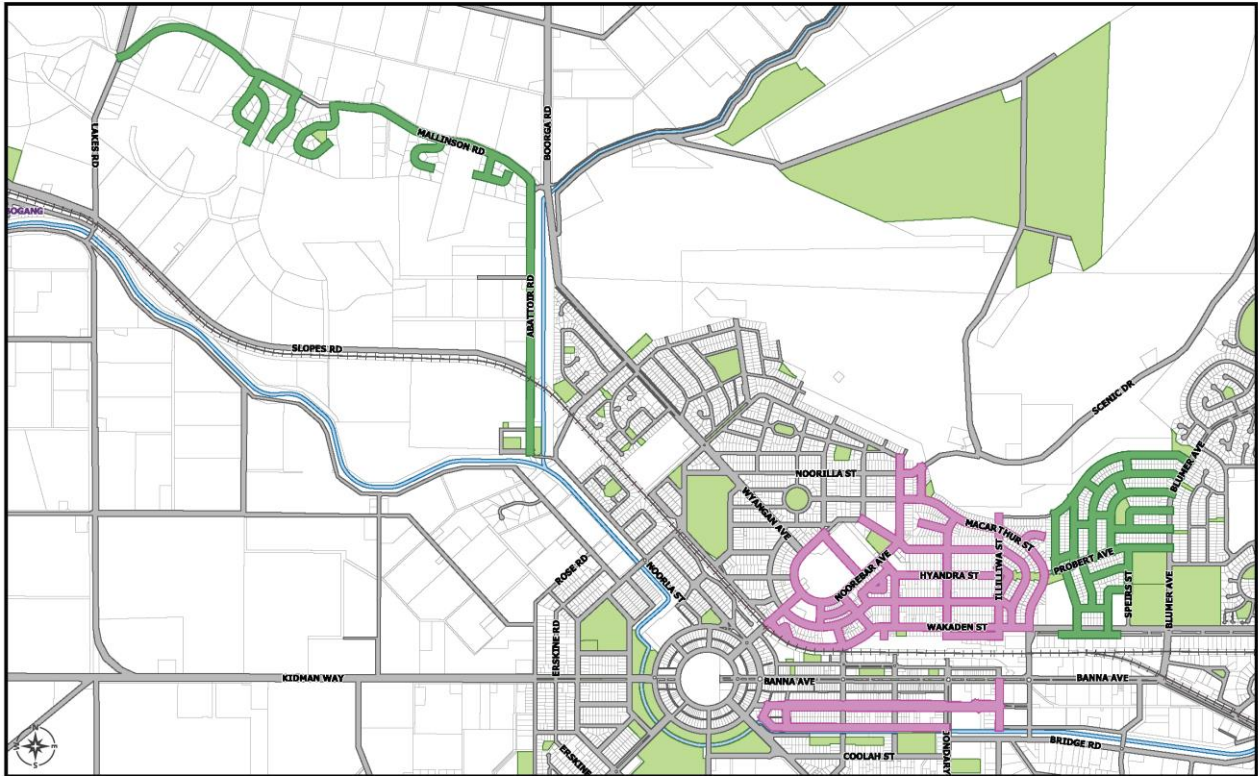
FOR MORE INFORMATION:

W: www.griffith.nsw.gov.au/waste-services

GRIFFITH CITY COUNCIL RECYCLING COLLECTION MAP

WEDNESDAY

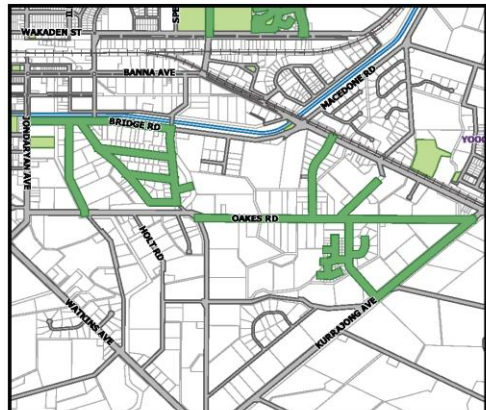
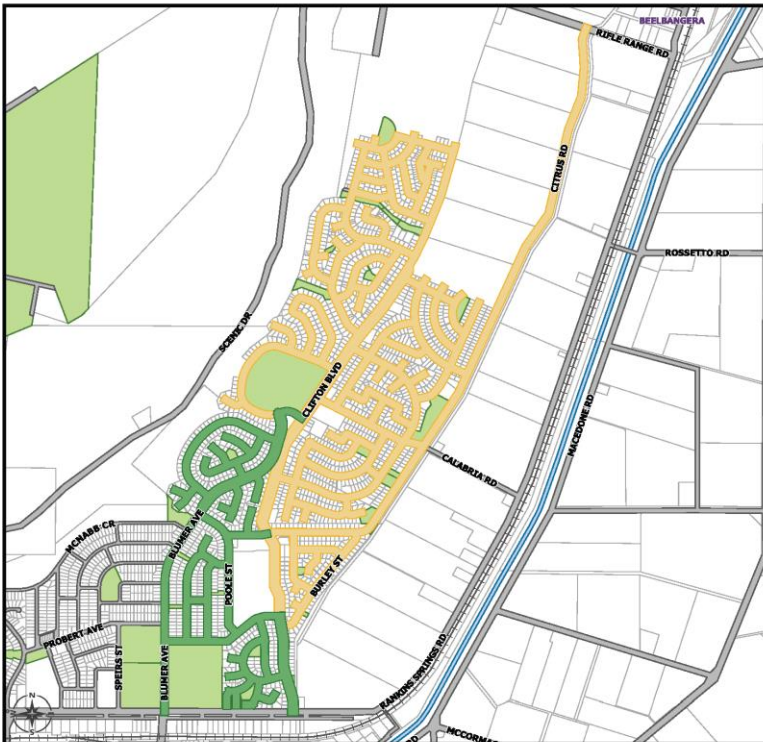
- Collection Key:
█ Wednesday Week A
█ Wednesday Week B



GRIFFITH CITY COUNCIL RECYCLING COLLECTION MAP

THURSDAY

- Collection Key:
█ Thursday Week A
█ Thursday Week B



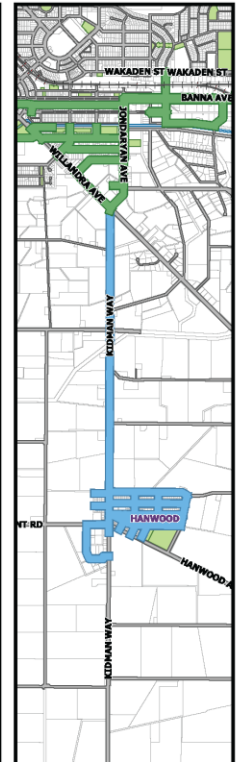
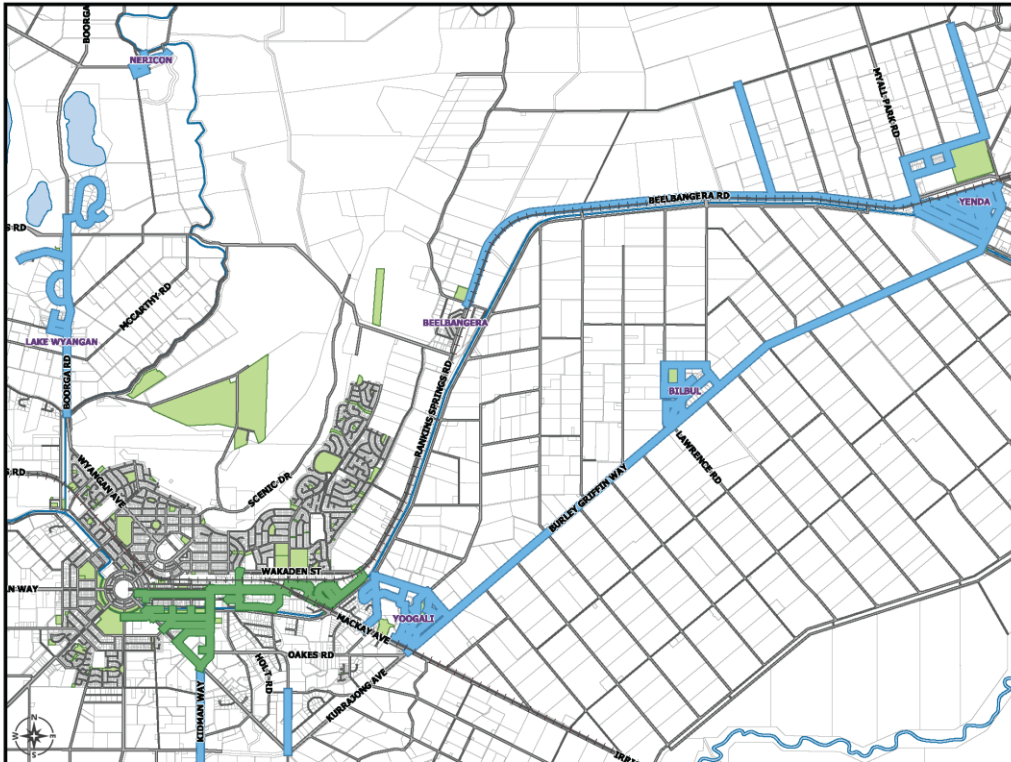
GRIFFITH CITY COUNCIL RECYCLING COLLECTION MAP

FRIDAY

Collection Key:

Friday Week A

Friday Week B



Garbage Collection

TO MAKE SURE YOUR BIN GETS COLLECTED:

Put your bin out the night before

Place it on the nature strip, not the road

Face the wheels to your house or property

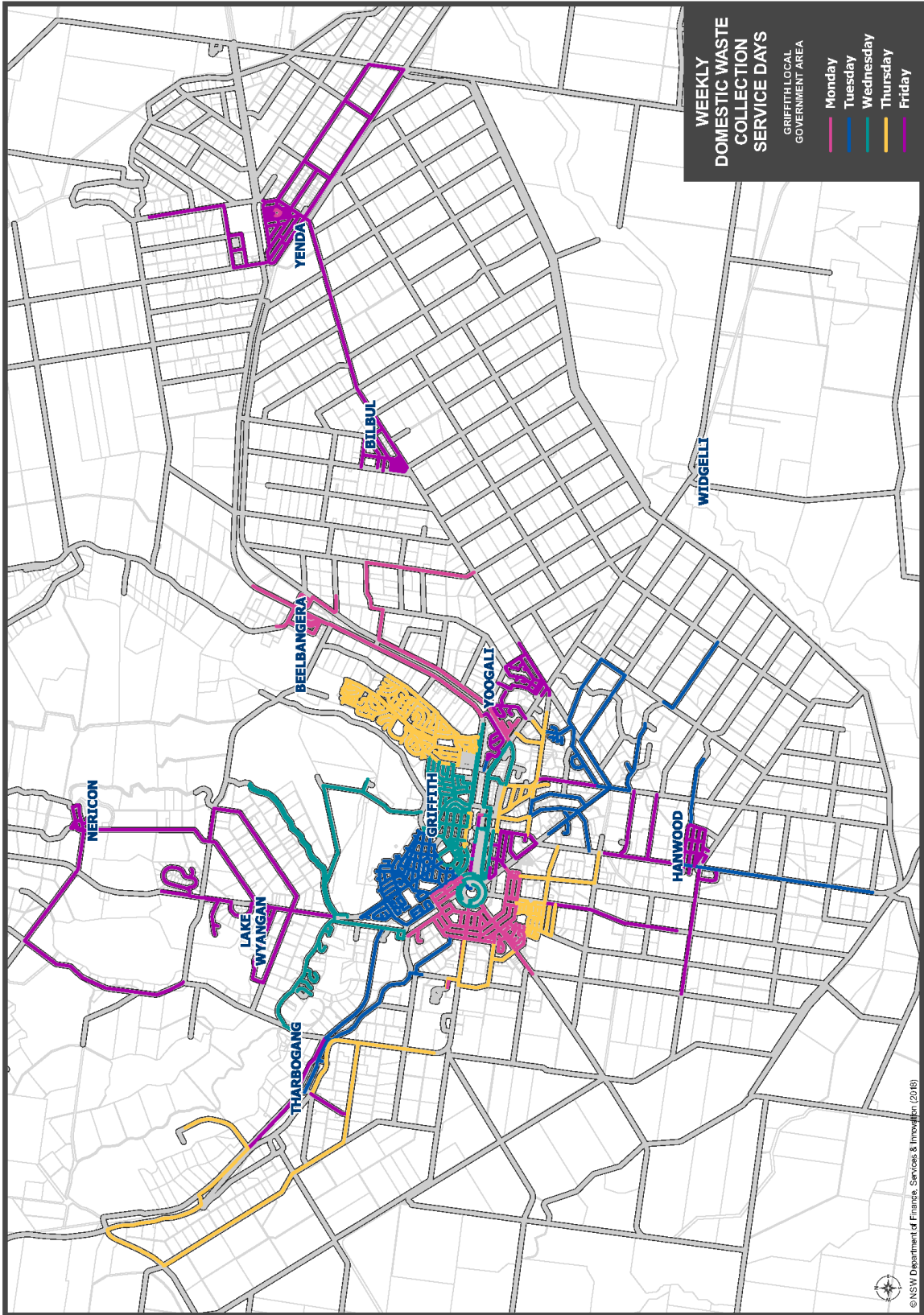
Ensure it's safe and secure

Don't overload the bin – maximum weight is 70 kilograms

Allow a minimum distance of one metre between your domestic waste bin and recycling bin

Don't place your bin under low branches.

CONTACT GRIFFITH CITY COUNCIL ON 02 6962 8100 FOR MORE INFORMATION OR TO REPORT A PROBLEM WITH YOUR BIN.





www.visitgriffith.com.au